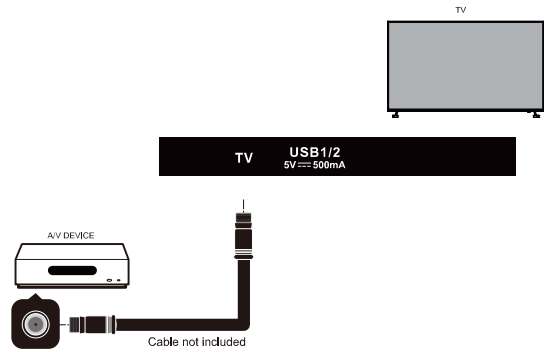
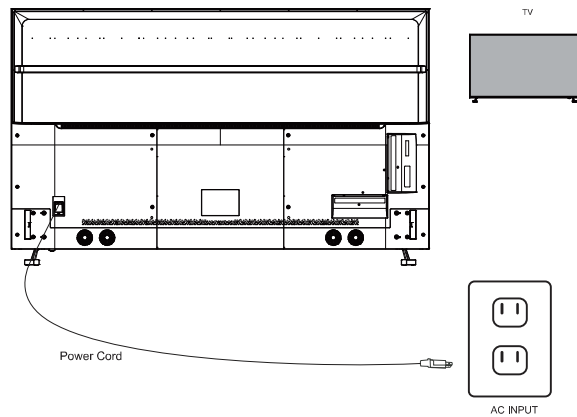


Basic Connection

Optical / Coaxial / RF Cable / Antenna



Connect Power Cord



Press the POWER button on the remote control to turn on the TV

QUICK START GUIDE



Simple Steps for Connecting your TV to A/V Devices



IMPORTANT NOTE:

During setup, do NOT run the "Channel Auto Scan" function if your TV is connected to a Cable or Satellite set top box

For technical support, visit our website www.bolvadigital.com or call the BOLVA Technical Support Center for technical assistance or troubleshooting at 1-866-594-5445, Monday to Saturday, 10:00AM to 7:00PM EST.

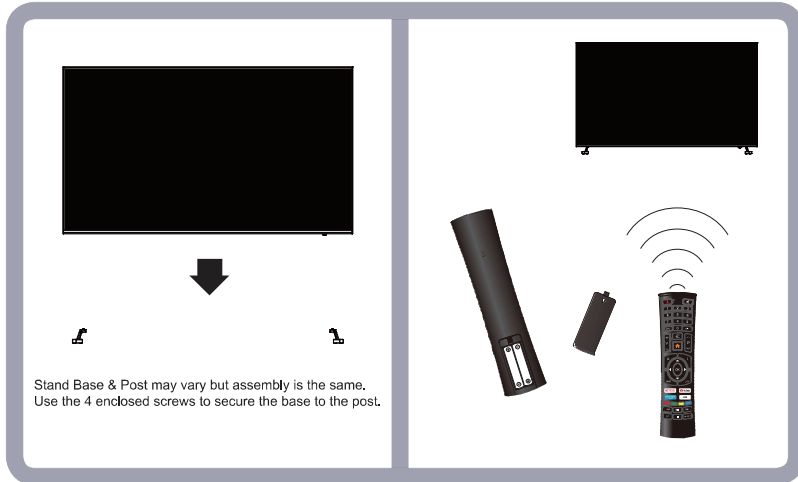
A/V Devices Include:

- Blu-ray® Disc Players
- DVD Players
- Cable, Satellite, or Set-Top Boxes
- VCRs
- Game Consoles

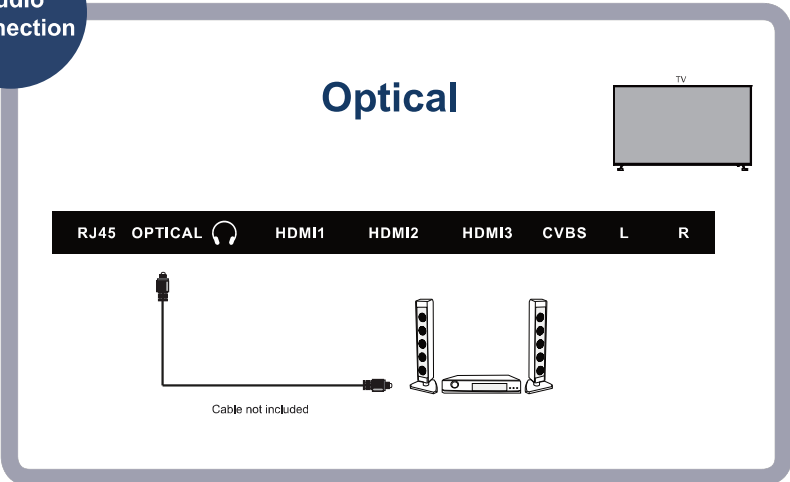
If you need additional help, please consult your user manual.

HDMI, the HDMI Logo and High-Definition Multimedia Interface are trademarks or registered trademarks of HDMI Licensing LLC.
 *Blu-ray Disc is a trademark of Blu-ray Disc Association, registered in the U.S. and other countries. All other trademarks are the property of their respective owners.

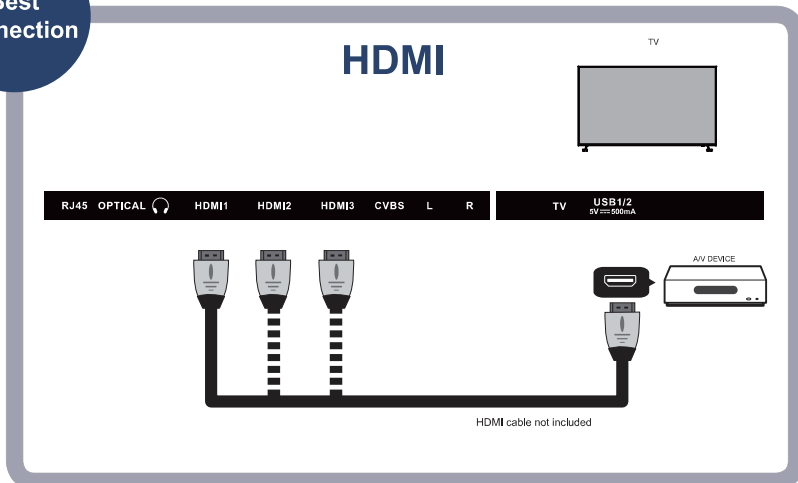
Insert the TV into the base and securely attach.
Install the batteries in the Remote Control



Audio Connection



Best Connection



Good Connection

